

Datasheet



LED 1w Power

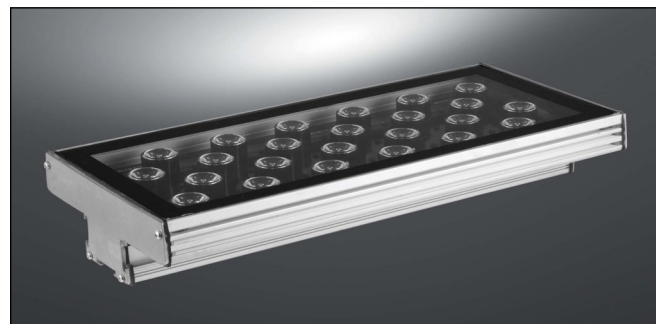
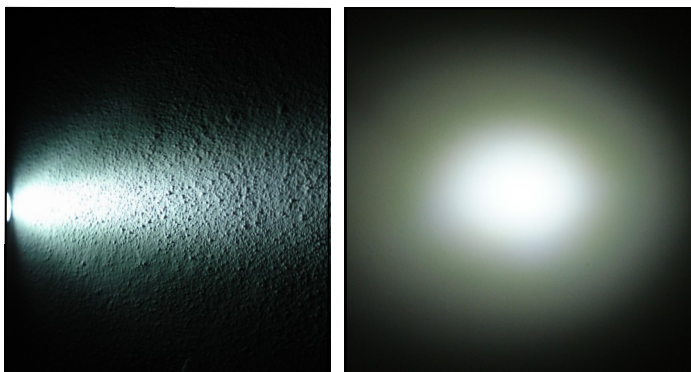


Code :10 D H 1 W

10⁰ Degree



LIGHTING PARAMETERS

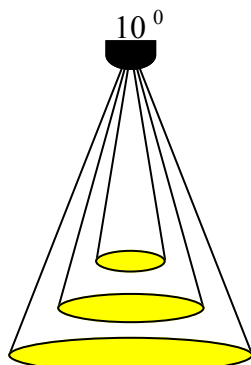
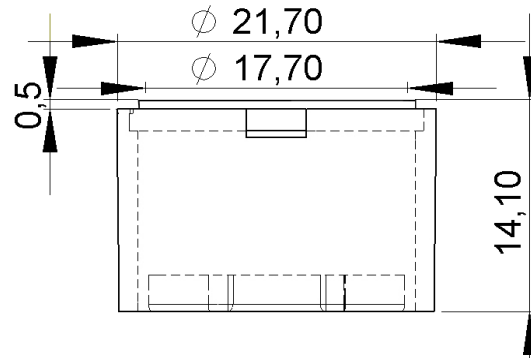
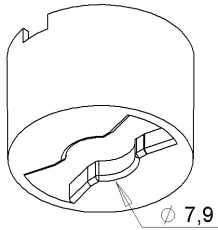
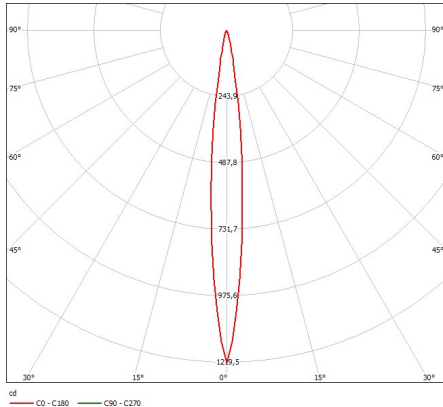


Box Quantity : 100X8=800 PCS
Box Size : 24*24*15 cm
Box Total Kg -/+%3: 3,63 Kg

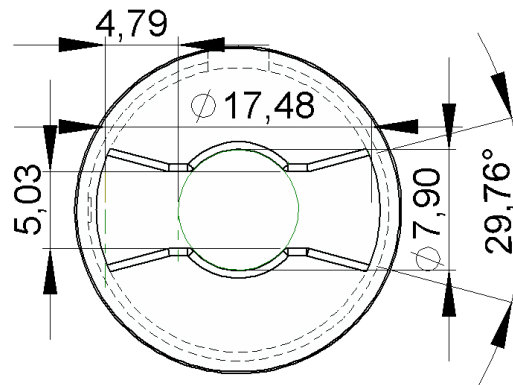
PACKAGING



TECHNICAL DATA



10 Degree
Light Dimension Parameters
1m / ϕ : 0,17 m
2m / ϕ : 0,35 m
3m / ϕ : 0,55 m



Custom Optical Design & Manufacture (Lens for LED's)All technical data contained in this document are properties of LENS may to change the content without prior notice.****

* Lens Use

* Streets, Offices, Homes, Stages, Architectural, Down Light , & Decorative Lighting

* Lens Material

- * Optical Grade PMMA / PC Best Available Optical Efficiency :
> 90 % ,PMMA with UV Light Transmittance High Productivity with 2mm Thickness
- * Operating Temperature: -40°C ~ + 80°C (upper limit +90°C) PMMA
- * Operating Temperature: -40°C ~ + 90°C (upper limit +100°C) PC
- * Average transmittance in visible spectrum: 400nm~700nm> 90% - (3mm thick PMMA)

* Holder information

- * Operating Temperature: -40°C ~ + 110°C PC V2 & ROHS UV Resistant
- Flammability Standard : V2 (burning stops within 30 seconds on a vertical specimen;
drips of flaming particles are allowed). High heat resistance

*Assembly Information

- * If adhesive is used, make sure that the adhesive is acid-free.
- * If you need to clean the lenses, use only mild soap and water. Use a very soft piece of cloth to dry.
- * Do not use any solvents on lenses
- * Our product is guaranteed against manufacturing defects only.
- * Do not store the product in a dusty & corrosive environment
- * Do not touch the optical portion of the lens with bare hands





Datasheet



LED 1w Power

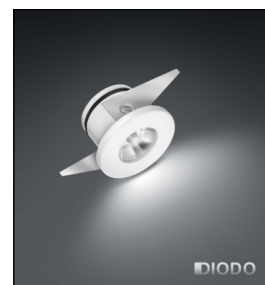
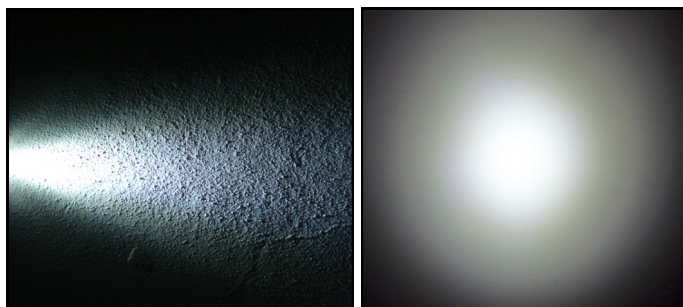


Code : 20 D H 1 W

20⁰ Degree



LIGHTING PARAMETERS



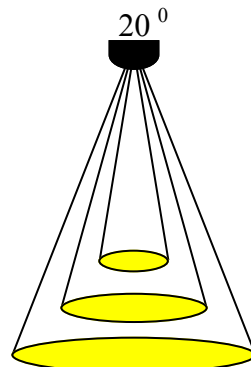
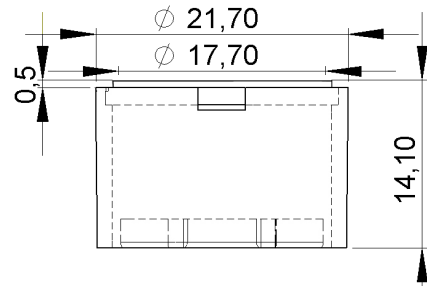
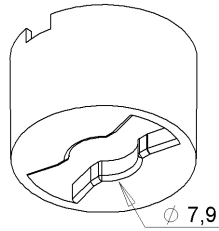
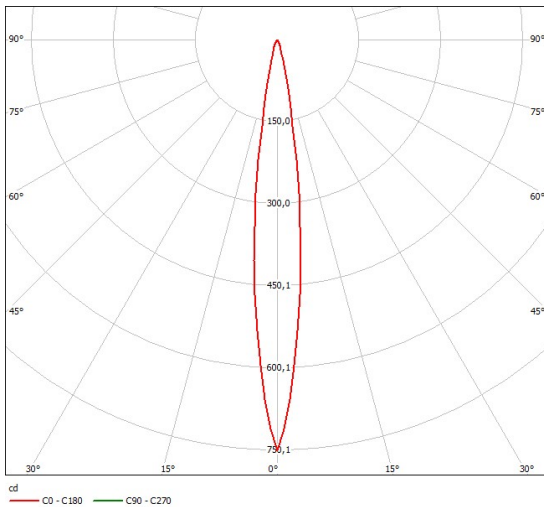
Box Quantity : 100X8=800 PCS
Box Size : 24*24*15 cm
Box Total Kg +/-3: Kg

PACKAGING



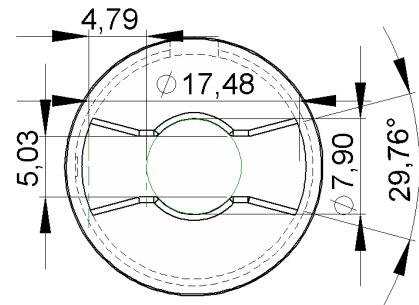
Datasheet

TECHNICAL DATA



20 Degree
Light Dimension Parameters

1m / Ø : 0,36 m
2m / Ø : 0,72 m
3m / Ø : 1,08 m



Custom Optical Design & Manufacture (Lens for LED's)All technical data contained in this document are properties of LENS may to change the content without prior notice.****

* Lens Use

* Streets, Offices, Homes, Stages, Architectural, Down Light , & Decorative Lighting

* Lens Material

- * Optical Grade PMMA / PC Best Available Optical Efficiency :
> 90 % ,PMMA with UV Light Transmittance High Productivity with 2mm Thickness
- * Operating Temperature: -40°C ~ + 80°C (upper limit +90°C) PMMA
- * Operating Temperature: -40°C ~ + 90°C (upper limit +100°C) PC
- * Average transmittance in visible spectrum: 400nm~700nm> 90% - (3mm thick PMMA)

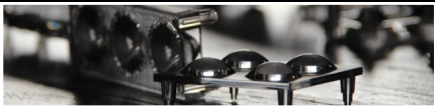
* Holder information

- * Operating Temperature: -40°C ~ + 110°C PC V2 & ROHS UV Resistant
- Flammability Standard : V2 (burning stops within 30 seconds on a vertical specimen;
drips of flaming particles are allowed). High heat resistance

*Assembly Information

- * If adhesive is used, make sure that the adhesive is acid-free.
- * If you need to clean the lenses, use only mild soap and water. Use a very soft piece of cloth to dry.
- * Do not use any solvents on lenses
- * Our product is guaranteed against manufacturing defects only.
- * Do not store the product in a dusty & corrosive environment
- * Do not touch the optical portion of the lens with bare hands





Datasheet



LED 1w Power

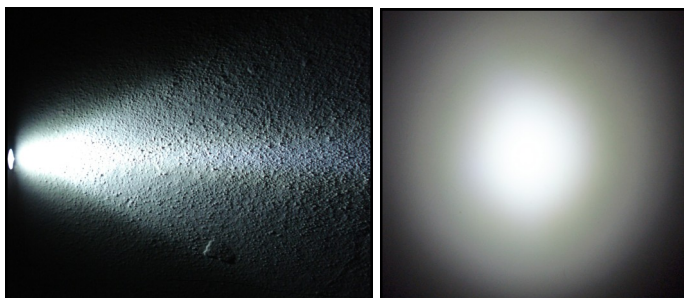


Code : 30 D H 1 W

30⁰ Degree



LIGHTING PARAMETERS



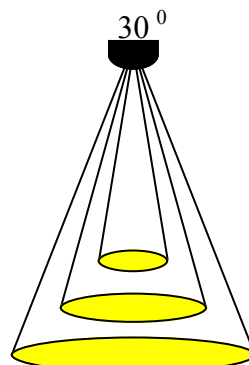
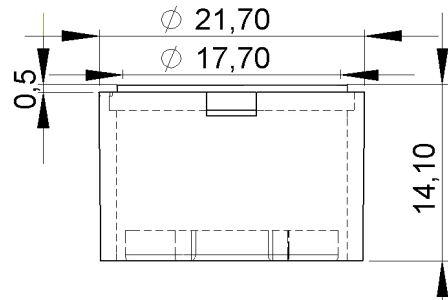
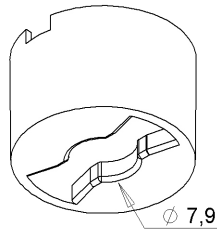
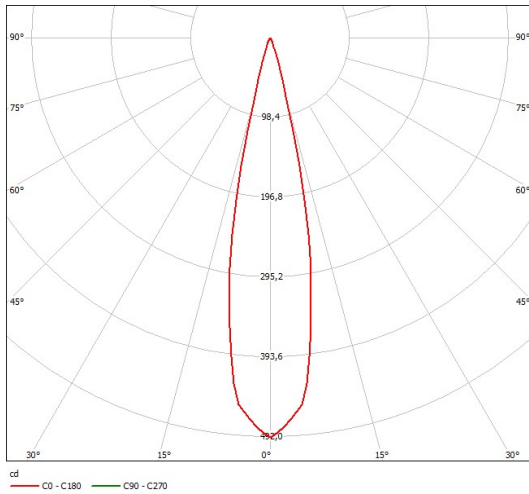
Box Quantity : 100X8=800 PCS
Box Size : 24*24*15 cm
Box Total Kg +/-3: 3,00 Kg

PACKAGING



Datasheet

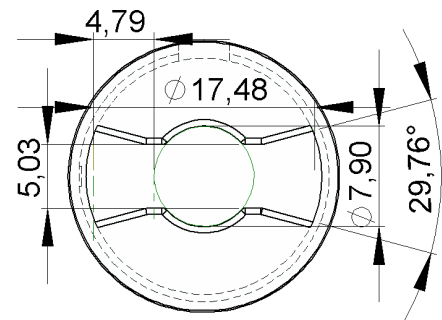
TECHNICAL DATA



30 Degree

Light Dimansion Parameters

1m / ϕ : 0,53 m
 2m / ϕ : 1,06 m
 3m / ϕ : 1,59 m



*LENS Custom Optical Design & Manufacture (Lens for LED's)All technical data contained in this document are properties of "LENS". LENS may to change the content without prior notice.****

* Lens Use

* Streets, Offices, Homes, Stages, Architectural, Down Light , & Decorative Lighting

* Lens Material

- * Optical Grade PMMA / PC Best Available Optical Efficiency :
 > 90 % ,PMMA with UV Light Transmittance High Productivity with 2mm Thickness
- * Operating Temperature: -40°C ~ + 80°C (upper limit +90°C) PMMA
- * Operating Temperature: -40°C ~ + 90°C (upper limit +100°C) PC
- * Average transmittance in visible spectrum: 400nm~700nm> 90% - (3mm thick PMMA)

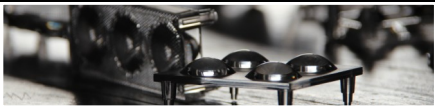
* Holder information

- * Operating Temperature: -40°C ~ + 110°C PC V2 & ROHS UV Resistant
- Flammability Standard : V2 (burning stops within 30 seconds on a vertical specimen;
 drips of flaming particles are allowed). High heat resistance

*Assembly Information

- * If adhesive is used, make sure that the adhesive is acid-free.
- * If you need to clean the lenses, use only mild soap and water. Use a very soft piece of cloth to dry.
- * Do not use any solvents on lenses
- * Our product is guaranteed against manufacturing defects only.
- * Do not store the product in a dusty & corrosive environment
- * Do not touch the optical portion of the lens with bare hands





Datasheet



LED 1w Power

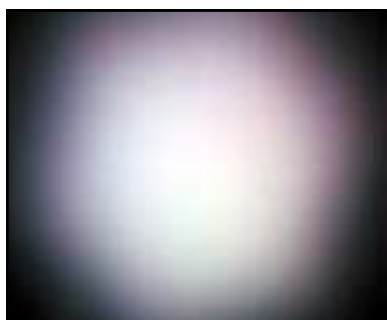
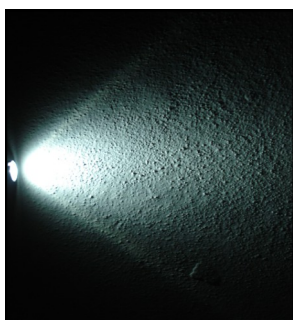


Code : 45 D H 2 W

45⁰ Degree



LIGHTING PARAMETERS

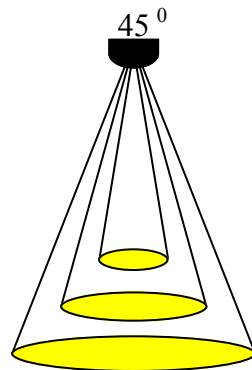
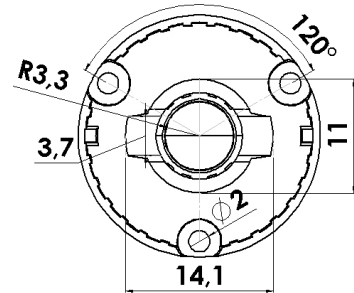
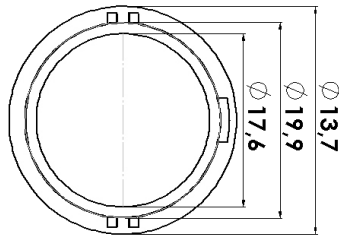
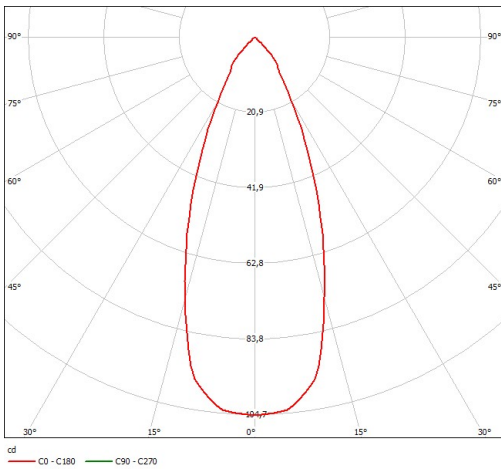


Box Quantity : 100X8=800 PCS
Box Size : 25*25*16 cm
Box Total Kg +/-3: 3,38 Kg

PACKAGING



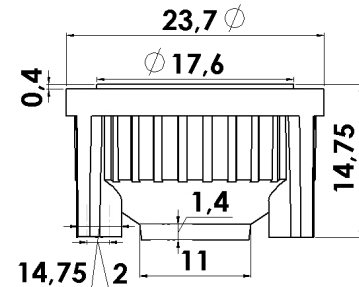
TECHNICAL DATA



45 Degree

Light Dimansion Parameters

1m / \varnothing : 0,80 m
 2m / \varnothing : 1,60 m
 3m / \varnothing : 2,40 m



* **LENS** Custom Optical Design & Manufacture (Lens for LED's)All technical data contained in this document are properties of "LENS". Lens may change the content without prior notice.****

* **Lens Use**

* Streets, Offices, Homes, Stages, Architectural, Down Light , & Decorative Lighting

* **Lens Material**

- * Optical Grade PMMA / PC Best Available Optical Efficiency :
 > 90 % ,PMMA with UV Light Transmittance High Productivity with 2mm Thickness
- * Operating Temperature: -40°C ~ + 80°C (upper limit +90°C) PMMA
- * Operating Temperature: -40°C ~ + 90°C (upper limit +100°C) PC
- * Average transmittance in visible spectrum: 400nm~700nm> 90% - (3mm thick PMMA)

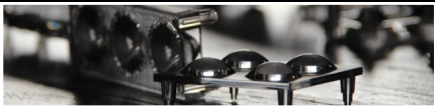
* **Holder information**

- * Operating Temperature: -40°C ~ + 110°C PC V2 & ROHS UV Resistant
- Flammability Standard : V2 (burning stops within 30 seconds on a vertical specimen;
 drips of flaming particles are allowed). High heat resistance

* **Assembly Information**

- * If adhesive is used, make sure that the adhesive is acid-free.
- * If you need to clean the lenses, use only mild soap and water. Use a very soft piece of cloth to dry.
- * Do not use any solvents on lenses
- * Our product is guaranteed against manufacturing defects only.
- * Do not store the product in a dusty & corrosive environment
- * Do not touch the optical portion of the lens with bare hands





Datasheet



LED 1w Power

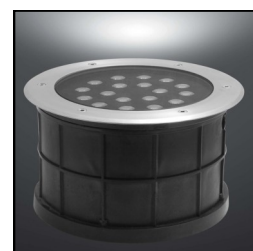
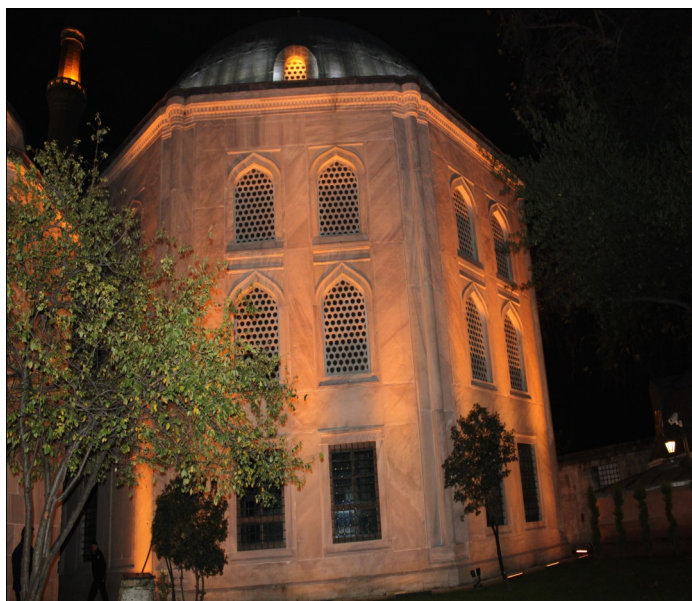
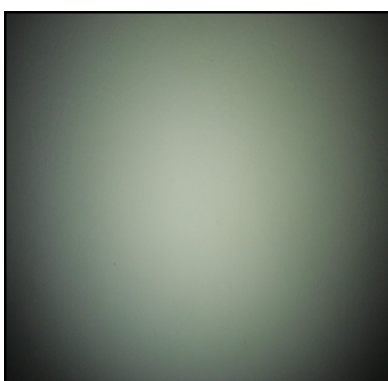


Code : 60 D H 2 T

60⁰ Degree



LIGHTING PARAMETERS



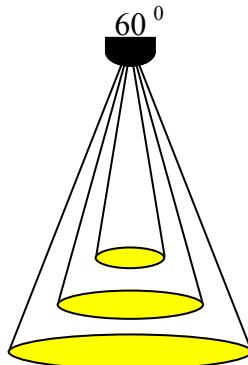
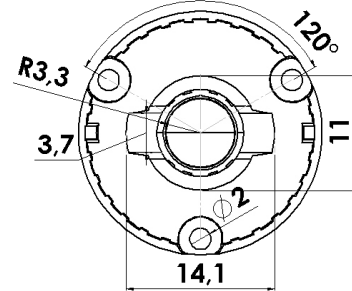
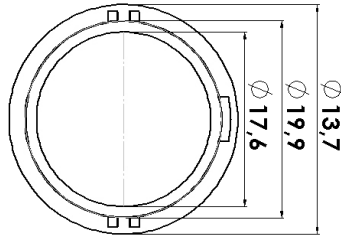
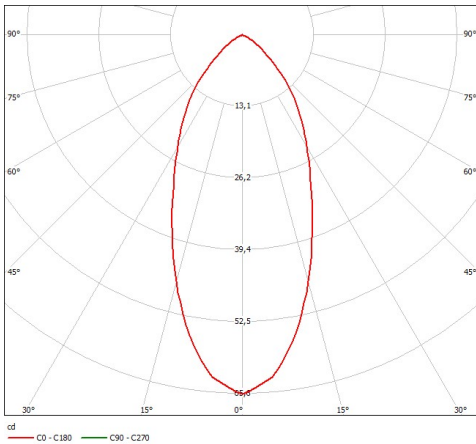
Box Quantity : 100X8=800 PCS
Box Size : 25*25*16 cm
Box Total Kg -/+%3: Kg

PACKAGING



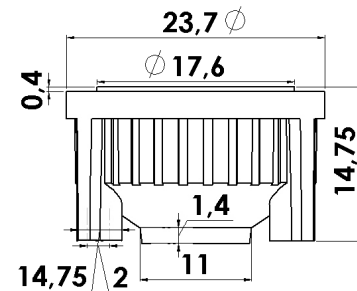
Datasheet

TECHNICAL DATA



60 Degree
Light Dimansion Parameters

1m / ϕ : 1,17 m
2m / ϕ : 2,35 m
3m / ϕ : 3,55 m



_____ Custom Optical Design & Manufacture (Lens for LED's)All technical data contained in this document are properties of "LENS". Lens may to change the content without prior notice.****

* Lens Use

* Streets, Offices, Homes, Stages, Architectural, Down Light , & Decorative Lighting

* Lens Material

- * Optical Grade PMMA / PC Best Available Optical Efficiency :
> 90 % ,PMMA with UV Light Transmittance High Productivity with 2mm Thickness
- * Operating Temperature: -40°C ~ + 80°C (upper limit +90°C) PMMA
- * Operating Temperature: -40°C ~ + 90°C (upper limit +100°C) PC
- * Average transmittance in visible spectrum: 400nm~700nm> 90% - (3mm thick PMMA)

* Holder information

- * Operating Temperature: -40°C ~ + 110°C PC V2 & ROHS UV Resistant
- Flammability Standard : V2 (burning stops within 30 seconds on a vertical specimen;
drips of flaming particles are allowed). High heat resistance

*Assembly Information

- * If adhesive is used, make sure that the adhesive is acid-free.
- * If you need to clean the lenses, use only mild soap and water. Use a very soft piece of cloth to dry.
- * Do not use any solvents on lenses
- * Our product is guaranteed against manufacturing defects only.
- * Do not store the product in a dusty & corrosive environment
- * Do not touch the optical portion of the lens with bare hands

